

Isabella

Gelato

H 137

P 90

L 131 (10) • 164 (13)

VG RS

Installazione Plug-in	Vetro frontale Temperato	Installation Plug-in	Front glass Tempered
Temperatura -16/-10 °C	Vetri laterali Temperato	Temperature -16/-10 °C	Side glass Tempered
Refrigerante R290	Chiusura posteriore Tenda manuale autoavvolgente	Refrigerant R290	Rear closing system Self-rolling curtain
Refrigerazione Statica	Piano di servizio Lamiera preverniciata bianca	Refrigeration Static	Work top White prepainted sheet
Compressore Ermetico	Illuminazione Led 5700 K	Compressor Hermetic	Lighting Led 5700 K
Sbrinamento Gas caldo	Movimentazione Ruote pivotanti con freno	Defrost Hot gas	Equipment handling Swivel casters with brake
Classe climatica 4	Cella di riserva Refrigerata statica con evaporatore a mantello	Climate class 4	Refrigerated storage Static refrigerated with skin evaporator
Vetro superiore Temperato		Upper class Tempered	

Colori disponibili
Available colours

Fianchi laterali / Griglia inferiore
Side panels / Bottom front grid

Grigio E_Z065



LX **PM_AD1**
Front sticker (standard)
Adesivo frontale

- | | | | | |
|------------------------------------|-----------------------------------|--|---------------------------------------|---------------------------------|
| Алматы (727)345-47-04 | Иваново (4932)77-34-06 | Магнитогорск (3519)55-03-13 | Ростов-на-Дону (863)308-18-15 | Тольятти (8482)63-91-07 |
| Ангарск (3955)60-70-56 | Ижевск (3412)26-03-58 | Москва (495)268-04-70 | Рязань (4912)46-61-64 | Томск (3822)98-41-53 |
| Архангельск (8182)63-90-72 | Иркутск (395)279-98-46 | Мурманск (8152)59-64-93 | Самара (846)206-03-16 | Тула (4872)33-79-87 |
| Астрахань (8512)99-46-04 | Казань (843)206-01-48 | Набережные Челны (8552)20-53-41 | Санкт-Петербург (812)309-46-40 | Тюмень (3452)66-21-18 |
| Барнаул (3852)73-04-60 | Калининград (4012)72-03-81 | Нижний Новгород (831)429-08-12 | Саратов (845)249-38-78 | Ульяновск (8422)24-23-59 |
| Белгород (4722)40-23-64 | Калуга (4842)92-23-67 | Новокузнецк (3843)20-46-81 | Севастополь (8692)22-31-93 | Улан-Удэ (3012)59-97-51 |
| Благовещенск (4162)22-76-07 | Кемерово (3842)65-04-62 | Ноябрьск (3496)41-32-12 | Саранск (8342)22-96-24 | Уфа (347)229-48-12 |
| Брянск (4832)59-03-52 | Киров (8332)68-02-04 | Новосибирск (383)227-86-73 | Симферополь (3652)67-13-56 | Хабаровск (4212)92-98-04 |
| Владивосток (423)249-28-31 | Коломна (4966)23-41-49 | Омск (3812)21-46-40 | Смоленск (4812)29-41-54 | Чебоксары (8352)28-53-07 |
| Владикавказ (8672)28-90-48 | Кострома (4942)77-07-48 | Орел (4862)44-53-42 | Сочи (862)225-72-31 | Челябинск (351)202-03-61 |
| Владимир (4922)49-43-18 | Краснодар (861)203-40-90 | Оренбург (3532)37-68-04 | Ставрополь (8652)20-65-13 | Череповец (8202)49-02-64 |
| Волгоград (844)278-03-48 | Красноярск (391)204-63-61 | Пенза (8412)22-31-16 | Сургут (3462)77-98-35 | Чита (3022)38-34-83 |
| Вологда (8172)26-41-59 | Курск (4712)77-13-04 | Петрозаводск (8142)55-98-37 | Сыктывкар (8212)25-95-17 | Якутск (4112)23-90-97 |
| Воронеж (473)204-51-73 | Курган (3522)50-90-47 | Псков (8112)59-10-37 | Тамбов (4752)50-40-97 | Ярославль (4852)69-52-93 |
| Екатеринбург (343)384-55-89 | Липецк (4742)52-20-81 | Пермь (342)205-81-47 | Тверь (4822)63-31-35 | |

Россия +7(495)268-04-70 Казахстан +7(727)345-47-04 Беларусь +3(75)257-127-884 Узбекистан +998(71)205-18-59 Киргизия +996(312)96-26-47

Isabella	10	13
Dimensioni esterne (LxPxH) External dimensions (LxDxH)	1317x906x1372 mm	1647x906x1372 mm
Peso (netto) Weight (net)	132 kg	192 kg
Refrigerazione Refrigeration	Statica Static	
Refrigerante Refrigerant	R290	
Sbrinamento Defrost	Gas caldo Hot gas	
Temperatura prodotto Product temperature	-16 / -10 °C	
Classe climatica Climate class	4	
Condizioni ambientali Operating conditions	30 °C / 55 %RH	
Classe energetica Energy class	A G C	A G C

DATI ELETTRICI - Modelli con unità condensatrici a bordo - condensazione ad aria
ELECTRICAL DATA - Models with on-board condensing units - air condensing

Compressore (q.tà - tipologia)	1 - Ermetico	2 - Ermetici
Compressor (q.ty - type)	Hermetic	Hermetics
Alimentazione Power supply	230 V / 1 Ph / 50 Hz	
Assorbimento elettrico (regime) Electrical input (nominal)	590 W / 3 A	980 W / 5,1 A
Assorbimento elettrico (sbrinamento) Electrical input (defrost)	1110 W / 5,2 A	1240 W / 5,8 A

ACCESSORI

OPTIONALS

Portaconi completo bianco		
White cone holder	•	•
Lavaporzatore con vaschetta inox e rubinetto		
Scoop washer with stainless steel container and water tap	•	•

ALLESTIMENTO - Vaschette gelato in acciaio inox (non comprese)

SETUP - Stainless steel containers (not included)

Vasca espositiva

Display

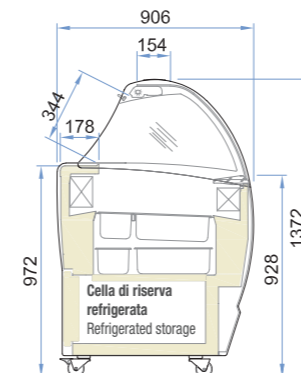
	14	18
4,75 Lt 260 x 157 x 170H		
5 Lt * 360 x 165 x 120H	20 (10 + 10)	26 (13 + 13)

Cella di riserva refrigerata

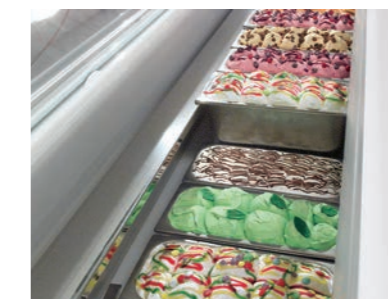
Refrigerated storage

	8	10
4,75 Lt 260 x 157 x 170H		
5 Lt * 360 x 165 x 120H	10 (5 + 5)	14 (7 + 7)

* Doppia fila di riserva / Piled up double row



Vasca espositiva - doppia fila di riserva
Display - piled up double row - 5 Lt



Cella di riserva refrigerata 10-13
Refrigerated storage

