

Коммерческие холодильники GE 1400 HE

Технические характеристики

По вопросам продаж и поддержки обращайтесь:

Алматы (727)345-47-04
Ангарск (3955)60-70-56
Архангельск (8182)63-90-72
Астрахань (8512)99-46-04
Барнаул (3852)73-04-60
Белгород (4722)40-23-64
Благовещенск (4162)22-76-07
Брянск (4832)59-03-52
Владивосток (423)249-28-31
Владикавказ (8672)28-90-48
Владимир (4922)49-43-18
Волгоград (844)278-03-48
Вологда (8172)26-41-59
Воронеж (473)204-51-73
Екатеринбург (343)384-55-89

Иваново (4932)77-34-06
Ижевск (3412)26-03-58
Иркутск (395)279-98-46
Казань (843)206-01-48
Калининград (4012)72-03-81
Калуга (4842)92-23-67
Кемерово (3842)65-04-62
Киров (8332)68-02-04
Коломна (4966)23-41-49
Кострома (4942)77-07-48
Краснодар (861)203-40-90
Красноярск (391)204-63-61
Курск (4712)77-13-04
Курган (3522)50-90-47
Липецк (4742)52-20-81

Магнитогорск (3519)55-03-13
Москва (495)268-04-70
Мурманск (8152)59-64-93
Набережные Челны (8552)20-53-41
Нижний Новгород (831)429-08-12
Новокузнецк (3843)20-46-81
Ноябрьск (3496)41-32-12
Новосибирск (383)227-86-73
Омск (3812)21-46-40
Орел (4862)44-53-42
Оренбург (3532)37-68-04
Пенза (8412)22-31-16
Петрозаводск (8142)55-98-37
Псков (8112)59-10-37
Пермь (342)205-81-47

Ростов-на-Дону (863)308-18-15
Рязань (4912)46-61-64
Самара (846)206-03-16
Санкт-Петербург (812)309-46-40
Саратов (845)249-38-78
Севастополь (8692)22-31-93
Саранск (8342)22-96-24
Симферополь (3652)67-13-56
Смоленск (4812)29-41-54
Сочи (862)225-72-31
Ставрополь (8652)20-65-13
Сургут (3462)77-98-35
Сыктывкар (8212)25-95-17
Тамбов (4752)50-40-97
Тверь (4822)63-31-35

Тольятти (8482)63-91-07
Томск (3822)98-41-53
Тула (4872)33-79-87
Тюмень (3452)66-21-18
Ульяновск (8422)24-23-59
Улан-Удэ (3012)59-97-51
Уфа (347)229-48-12
Хабаровск (4212)92-98-04
Чебоксары (8352)28-53-07
Челябинск (351)202-03-61
Череповец (8202)49-02-64
Чита (3022)38-34-83
Якутск (4112)23-90-97
Ярославль (4852)69-52-93

Россия +7(495)268-04-70

Казахстан +(727)345-47-04

Беларусь +(375)257-127-884

Узбекистан +998(71)205-18-59

Киргизия +996(312)96-26-47

эл.почта: iah@nt-rt.ru || сайт: <https://isa.nt-rt.ru/>

GE 1400 HE

Upright refrigerated cabinet that combines ergonomics and energy saving with minimal aesthetics



GE 700
GE 1400
Labor Plus
Magnum Plus



-18 / -15 °C

GE 700
GE 1400
Magnum Plus

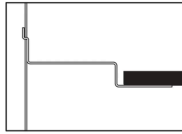


-2 / + 8 °C

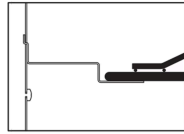
Refrigerated storage at the service of a range of cabinets for professional kitchen in different capacities with single and double doors. Ventilated or static refrigeration and positive or negative temperature. Design for everyday use; 80 mm insulation thickness for greater energy savings and ergonomics designed to ensure comfort in set-up, handling and everyday maintenance. Committed to the environment, refrigerant gases and natural insulation at the heart of performance. Energy saving and respect for the environment are the focus of performance.

Internal setup

The standard equipment for each door includes 4 stainless steel racks (10 positions - pitch 130 mm) and 3 white plastic-coated GN 2/1 shelves. For GE 700 models, 12 plastic supports with maximum load of 30 Kg per shelf, while for 1400 models, 6 pairs of stainless steel C pairs of guide rails (652 mm) with maximum load of 60 Kg per shelf. GN 2/1, EN 60x40 trays, 2L and C pairs of guide rails are provided as optional accessories.



2L guide rails + EN 60x40 tray
Guide 2L + teglia EN 60x40



2L guide rails + EN 60x40 shelf
Guide 2L + griglia EN 60x40

GE 1400 HE

The essentials

The GE HE range of refrigerated storage cabinets are available with 1 door and 2 doors. With the characteristics that distinguish each model, Evo and Plus are provided with ventilated refrigeration and temperature range $-2/+8$ °C or $-18/-15$ °C, the essentials of every professional kitchen.

Finishing and internal surface

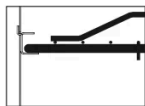
They have been realized with different materials to increase the choice of range. GE HE has been designed entirely in AISI 304 stainless steel. The internal walls and the bottoms of the refrigerated compartments are made with rounded corners. The insulation thickness is 80 mm.

Easy to clean

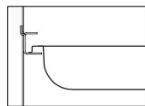
The interior design of the cabinet is designed to make daily cleaning as easy as possible. The interior walls and bottoms of the refrigerated compartments are made with rounded corners. The racks and gasket are completely removable, allowing for better cleaning and space optimization.

GN 2/1 Trays / Teglie (per door / per porta)	H20 (650x530x20H)	H40 (650x530x40H)	H60 (650x530x60H)	H100 (650x530x100H)
Standard racks (130 mm pitch) Cremagliere di serie (Passo 130 mm)	10	10	10	10
Max load racks (60 mm pitch) Cremagliere massimo carico (Passo 60 mm)	21	21	10	10

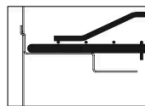
1 Pair of 2L or C guide rails per tray / 1 Coppia guida 2L o C per teglia



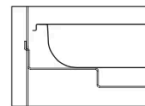
C guide rails + GN 2/1 shelf
Guide C + griglia GN 2/1



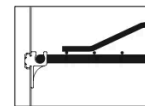
C guide rails + GN 2/1 tray
Guide C + teglia GN 2/1



2L guide rails + GN 2/1 shelf
Guide 2L + griglia GN 2/1



2L guide rails + GN 2/1 tray
Guide 2L + teglia GN 2/1



Supports + GN 2/1 shelf
Supporti + griglia GN 2/1

Natural technology and energy efficiency

Natural refrigerant

The use of natural refrigerants R290 and R600a, allows the reduction of CO2 emissions and the reduction of 5-10% of average energy consumption. The sustainable choice for the environment.

Cyclopentane natural insulation

The use of polyurethane foam with cyclopentane in addition to maximizing thermal insulation, allows the reduction of consumption and environmental impact. The thickness of insulation of the shells of 80 mm allows greater structural stability of the refrigerated cabinet and a reduction in heat loss for further energy savings.

Electronic fans

The condensing unit and the evaporating unit are equipped with electronic fans with low noise and mechanical vibrations, allowing a reduction of energy consumption up to 60%. In the case of Labor, the fans are present in the condenser.

Low vibration

Free to work in maximum silence. The Lab collection of refrigerated storage cabinets adopts the most advanced technologies to make the working environment silent and comfortable; the condensing unit is equipped with hermetic compressor and electronic fans with low noise and mechanical vibrations.

Thermal break

The front structure of the compartment includes a perimeter frame coupling the body of the refrigerated cabinet, with thermo-welded joint corners. This design avoids heat loss between the door gasket and the cabinet, ensuring a high thermal break between the interior and exterior of the refrigerated cabinet.



Ergonomics and maintenance

Easy access to condensing unit

The condensing unit is accessible thanks to a system of hinges that allow the opening of the casing door, allowing a reduction in service times and facilitating ordinary and extraordinary maintenance operations.

Cooling unit

Each refrigerated cabinet provides for the positioning of the cooling unit, in the external technical compartment above the refrigerated module, independently from the latter. A structure that allows for over 10% more storage space, maximum corrosion protection and easy access for cleaning and maintenance.

Handling equipment

The stainless steel feet are adjustable in height, with a wide range from 115 mm to 175 mm. Suitable for any type of floor, they guarantee the maximum stability of the refrigerated cabinet and the perfect aesthetic alignment between the modules placed side by side. Directional castors with locking brake are available as an optional, to facilitate the movement of the cabinet inside the professional kitchen.

Evaporator protective coating

A protective coating has been applied to the evaporator by means of cataphoresis, which eliminates the risk of possible refrigerant leaks due to corrosion phenomena resulting from the presence of citric acids and/or vinegar in certain types of preserved foods.

Performance

Self closing doors

The doors with automatic return, are equipped with pivot hinges that allow the opening of the door up to 170° with the simultaneous blocking in open position at 90°.

Locking door

The ISA Lab range of refrigerated cabinets features a key lock, which protects the contents of the refrigerator by blocking the door from being opened.

Reversible door

Thanks to the presence of the same fixing interfaces of the pivot hinges, the doors are reversible even in case of post-installation needs. They can have right or left opening, without the need of special accessories or spare parts.

Lighting

In the GE HE positive temperature version, lighting is provided by a led courtesy light positioned on the control panel casing, which automatically turns on when the door is opened.

Multiple openings

The decompression valve quickly balances the pressure in the refrigerated compartment, allowing the door to be opened repeatedly and avoiding the formation of condensation as an effect of pressure changes.



Technical Features

GE 1400 HE

Installation

- Plug-in

Energy class

- C (TB)
- C (TN)

Standard equipment

- 6 Adjustable grids (532/1)
- 6 Pair of C guides (an steel)
- 8 stainless steel racks (mm)
- Door lock with key

Product temperature

- -2/+8 °C
- -18/-15 °C

Refrigerant

- R290

Refrigeration

- Ventilated

Compressor

- Hermetic

Defrost

- Hot gas (TB)
- Off cycle (TN)

Climate class

- 5 (40 °C / 40% RH)

Opening system

- Reversible self-closing
- right configuration

Insulation

- Cyclopentane 80 mm

Base

- Height adjustable feet
- casters with brake (optional)

External

- Stainless steel AISI 304

Internal

- Stainless steel AISI 304

По вопросам продаж и поддержки обращайтесь:

Алматы (727)345-47-04
Ангарск (3955)60-70-56
Архангельск (8182)63-90-72
Астрахань (8512)99-46-04
Барнаул (3852)73-04-60
Белгород (4722)40-23-64
Благовещенск (4162)22-76-07
Брянск (4832)59-03-52
Владивосток (423)249-28-31
Владикавказ (8672)28-90-48
Владимир (4922)49-43-18
Волгоград (844)278-03-48
Вологда (8172)26-41-59
Воронеж (473)204-51-73
Екатеринбург (343)384-55-89

Иваново (4932)77-34-06
Ижевск (3412)26-03-58
Иркутск (395)279-98-46
Казань (843)206-01-48
Калининград (4012)72-03-81
Калуга (4842)92-23-67
Кемерово (3842)65-04-62
Киров (8332)68-02-04
Коломна (4966)23-41-49
Кострома (4942)77-07-48
Краснодар (861)203-40-90
Красноярск (391)204-63-61
Курск (4712)77-13-04
Курган (3522)50-90-47
Липецк (4742)52-20-81

Магнитогорск (3519)55-03-13
Москва (495)268-04-70
Мурманск (8152)59-64-93
Набережные Челны (8552)20-53-41
Новокузнецк (3843)20-46-81
Ноябрьск (3496)41-32-12
Новосибирск (383)227-86-73
Омск (3812)21-46-40
Орел (4862)44-53-42
Оренбург (3532)37-68-04
Пенза (8412)22-31-16
Петрозаводск (8142)55-98-37
Псков (8112)59-10-37
Пермь (342)205-81-47

Ростов-на-Дону (863)308-18-15
Рязань (4912)46-61-64
Самара (846)206-03-16
Санкт-Петербург (812)309-46-40
Саратов (845)249-38-78
Севастополь (8692)22-31-93
Саранск (8342)22-96-24
Симферополь (3652)67-13-56
Смоленск (4812)29-41-54
Сочи (862)225-72-31
Ставрополь (8652)20-65-13
Сургут (3462)77-98-35
Сыктывкар (8212)25-95-17
Тамбов (4752)50-40-97
Тверь (4822)63-31-35

Тольятти (8482)63-91-07
Томск (3822)98-41-53
Тула (4872)33-79-87
Тюмень (3452)66-21-18
Ульяновск (8422)24-23-59
Улан-Удэ (3012)59-97-51
Уфа (347)229-48-12
Хабаровск (4212)92-98-04
Чебоксары (8352)28-53-07
Челябинск (351)202-03-61
Череповец (8202)49-02-64
Чита (3022)38-34-83
Якутск (4112)23-90-97
Ярославль (4852)69-52-93

Россия +7(495)268-04-70

Казахстан +(727)345-47-04

Беларусь +(375)257-127-884

Узбекистан +998(71)205-18-59

Киргизия +996(312)96-26-47

эл.почта: iah@nt-rt.ru || сайт: <https://isa.nt-rt.ru/>